

# Windows® Vista / Windows® 7 Important Information - Please Read First!

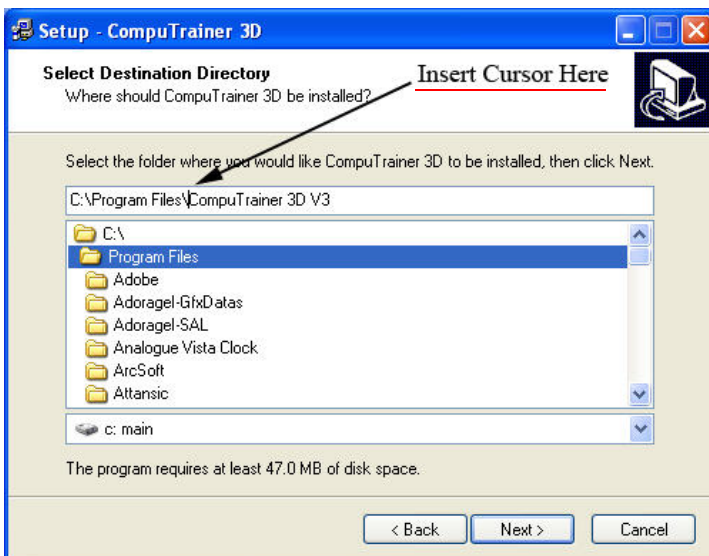
## Installation Path Selection

If you are running Windows® Vista or Windows® 7 the default installation path of your RacerMate software will need to be modified slightly on some applications. Some software will want to install itself to the “C:\Program Files” folder and Windows® no longer allows application write functions to Program Files. To work around this issue modify the default install path during setup to install into the C:\ drive. When asked by the installation application where you want to install the software, insert your mouse cursor into the path that might state:

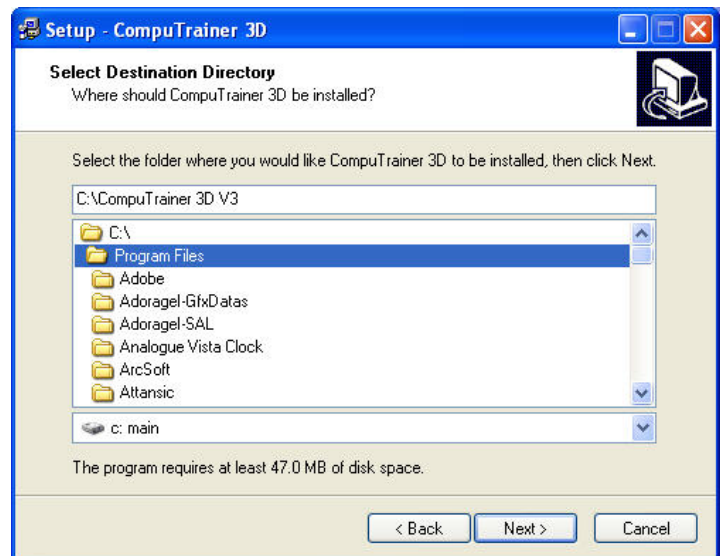
C:\Program Files\CompuTrainer 3D V3 (see Image #1 below). Please Note: Other applications will have a different installation path; like: Velotron 3D or CompCS, etc.).

In the above example change this to “C:\CompuTrainer 3D V3” by back-spacing or deleting the words Program Files) from the path (see Image 2 below).

If you have any questions regarding this procedure, please contact RacerMate technical support at the numbers or e-mail listed below..



*Image 1:* The image at the left is what you will see by default when trying to install CompuTrainer 3D V3. You can insert your mouse cursor just after the “\” in Program Files and back-space to remove “Program Files”.



*Image 2:* Make sure the path now shows: C:\CompuTrainer 3D V3 (if installing CompuTrainer 3D). These same instructions would apply to all other RacerMate Software Applications installed.

## Disable Aero features in favor of Basic

In addition, you should also change your color settings in the computer from Aero to Basic by right-clicking the Windows® Vista desktop and left-clicking Personalize, then choosing Window Color and Appearance. In Color Scheme choose Windows Vista Basic instead of Vista Aero. For Windows® 7, choose Personalize and the choose a theme such as Windows 7 Basic.



Maker of CompuTrainer™ and Velotron™

3016 N.E. Blakeley St. Seattle WA 98105  
Tel: (206) 524-7392 Toll Free (800) 522-3610 Fax (206) 523-4961  
E-mail: [service@racermateinc.com](mailto:service@racermateinc.com) • web site: [www.racermateinc.com](http://www.racermateinc.com)

R981-339-00  
Vista/7 10/2009